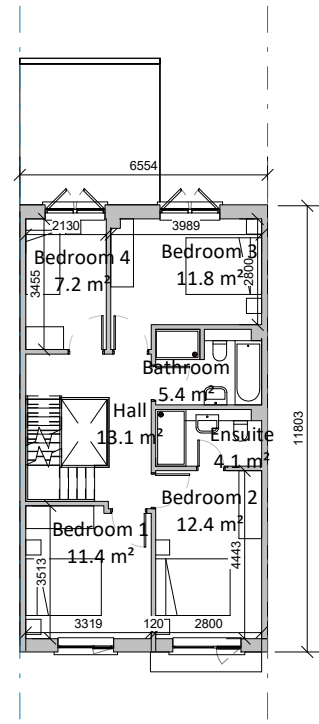
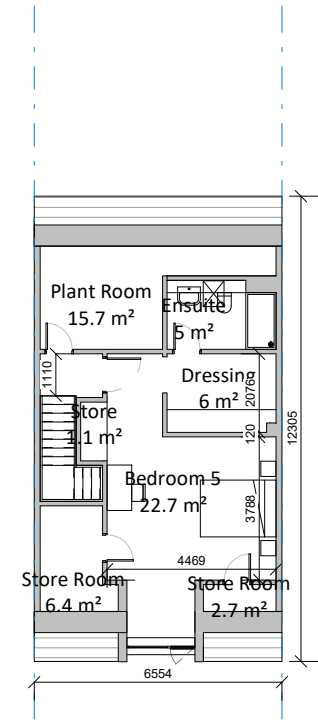


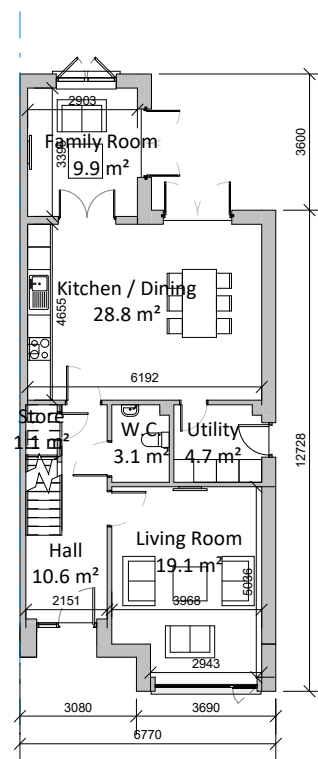
① H06A Mid Terrace Level 00
1 : 200



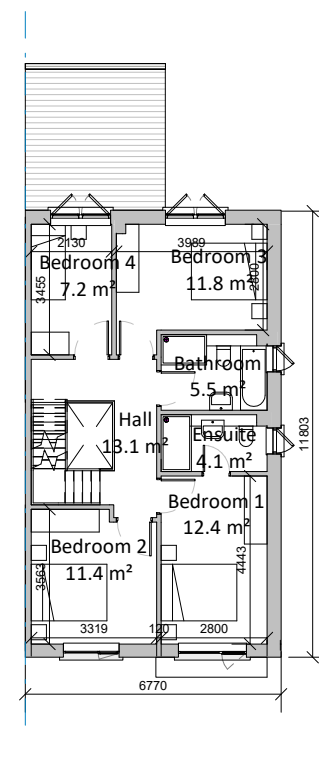
② H06A Mid Terrace Level 01
1 : 200



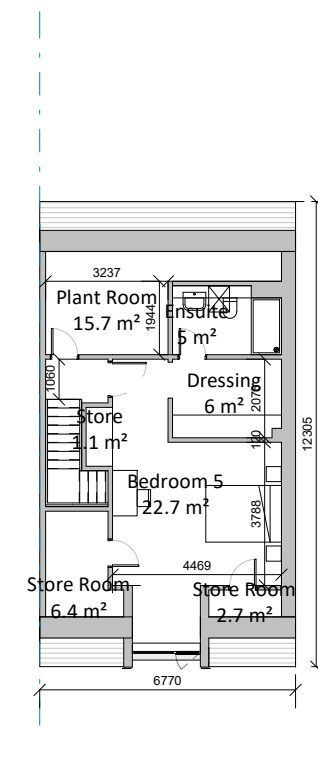
③ H06A Mid Terrace Level 02
1 : 200



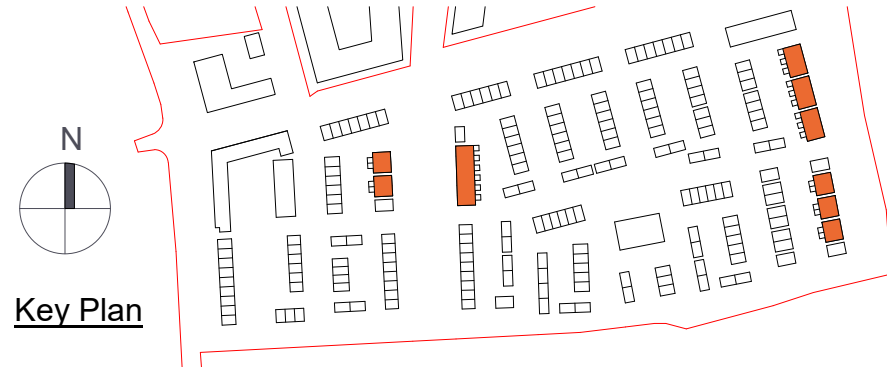
④ H06A Semi Detached Level 00
1 : 200



⑤ H06A Semi Detached Level 01
1 : 200



⑥ H06A Semi Detached Level 02
1 : 200



Revision Description	Date	Rev. No.	Issued by
Issued for Planning	09.10.2019	1	an/tt

omahony pike

architecture | urban design | Dublin | Cork
 email: info@omahonypike.com | The Chapel | 26 South Mall
 tel: +353 1 202 7400 | Mount St. Anne's | Cork City
 fax: +353 1 283 0822 | Milltown, Dublin 6 | Co. Cork
 www.omahonypike.com | D06 XNS2 Ireland | T12 R2RV Ireland

Project: Woodbrook Phase 1
Location: Woodbrook
Client: Aeval

Project No.: 1618
Project Lead: SD
Drawn By: TT
Model No.: 1618-OMP-00-ZZ-M3-A-0001
Purpose: Planning

Scale @ A3: 1 : 200
Date Printed: 09.10.2019
Current Rev.: 1
Status: S0

Drawing Title: H06A - Plans
Drawing No.: 1618-OMP-H06A-ZZ-DR-A-11001

Figured dimensions only to be used. This drawing is copyright of O'Mahony Pike Architects Ltd. All information is shared as per approved use in accordance with BS1192(2007) + A2(2016), Table 5; Standard Codes for Suitability of Models and Documents. If the 'Status' field is empty, this information has been shared at SO - WIP.